



Graffiti vandalism on a SkyTrain car that occurred overnight, September 26-29, 2020. (33AAPP/Reddit)

Silshield® AGPS Series Anti-Graffiti Safety Film

Born for protection

Silshield® anti-graffiti film is a undetectable, optical clear, durable and cost-effective solution to eradicate vandalism, including acid etching, scratching and permanent markers. Reducing the downtime and labor time for maintenance, resulting in increased profitability.

The high-performance anti-graffiti coating deters most of the chemicals and cleaning scratches.

Compliant with various fire test standards, qualified for fire, smock and toxic gasses tests.

Protection.

Designed to protect glass or metal surface from vandalism:

- Scratches
- Acid etching
- Tagging
- Hard water stains...



Cost-Effective.

Just peel off the defaced film and tint a new one. No bother to replace the window and frame.



Safety.

Glasses are the most vulnerable parts of the building. Thanks to Silshield® advanced adhesive layer, the anti-graffiti film is also able to serve as the safety barrier to hold and contain the shards if the glasses are broken, by human activity or mother nature, like high-power winds and storms.



Block Harmful UV Rays.

Blocks up to 99% of the harmful UV rays, which can lead to uncomfortable and skin cancer.



High Standard.

Originated from the rail-transit industry, engineered according to the rigorous requirements:

- Optical grade PET
- 15years+ life cycle
- Get the balance point of 'robust peeling strength' and 'little residual adhesive'



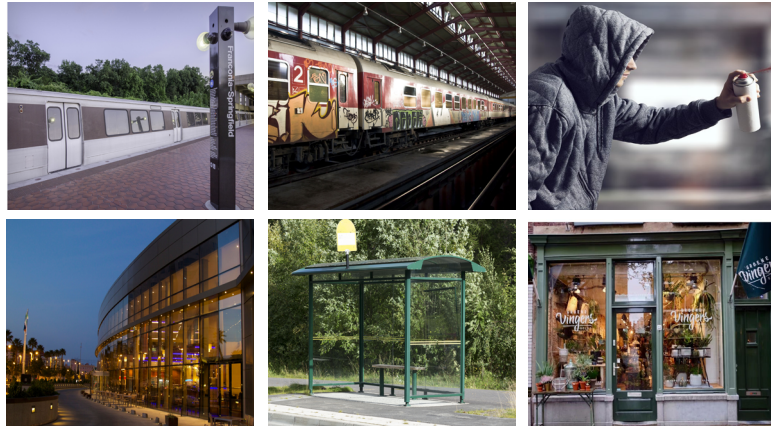
Silshield® Anti-Graffiti Film has been rigorously tested to meet the various standards and regulations:

EN45545-2	Fire protection of railway vehicles – Part 2: Requirement for fire behaviors of materials and components
ISO 5658-2:2006	<i>Lateral Flame Spread</i>
ISO 5660-1:2015	<i>Reaction to fire: heat release, smoke production, mass loss rate</i>
ISO 5659-2:2017	<i>Smoke Generation</i>
ISO 5659-2:2017	<i>Toxic Gas Analysis</i>
NF F31-112	G0, G1
BS6853	Fire Test, Passed Ia Standard
REACH SVHCs	No contain of the 'substance of very high concern (SVHCs)'

Applications

Protect your public spaces and company image with Silshield® anti-graffiti film. Silshield® MAGPS Series Anti-Graffiti Film can be applied to glass and other suitable flat surfaces.

- Public Transport
- Bus Stations
- Hotels
- Restaurant
- Glass Displays
- Public Buildings
- Hospitals
- Restrooms
- Elevators and Escalators



Technical Data	MAGPS-04	MAGPS-02	AGPS-04	AGPS-06
Layers structure	4 layers	4 layers	1 layer	1 layer
Each layer thickness	4 mil	2 mil	4mil	6mil
Total Thickness	19mil	10mil	4mil	6mil
Anti-Graffiti Performance (according to NF F31-112)	G1 can customize G0	G1 can customize G0	G1 can customize G0	G1 can customize G0
Puncture Strength	340.6N	172.9N	92.2N	192.2N

* The data comes from the third party laboratories or ggaea-meilleur internal lab, only for reference.

Offered by GGAEA-MEILLEUR, a leading manufacturer of innovative films for industries across the globe.

- Rail Tansit Industry
- Architectural Industry
- Equipment Manufacutring Industry
- Millitary

For more information and technical details needed, please feel free to contact us:

lliu@ggaea.com +86 13816115165 www.ggaea.com
 No. 111, Weizishan Road, Marine Equipment Industrial Park, West Coast New District, Qingdao,
 Shan Dong, China
 Qingdao Ggaea-Meilleur New Material Co., Ltd

